



System IC FAB Environment Control

System IC FAB Cleanroom Specification

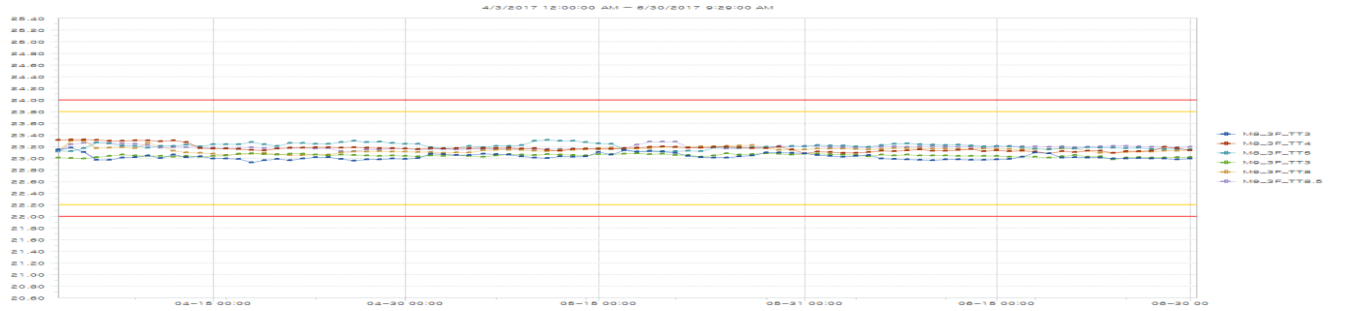
- Detailed Spec for Clean room

Control Item		Unit	Measuring Frequency
Cleanliness	Cleanroom (Process Area)	ea/ft ³	Off-Line
Temperature	Process Area	°C	On-Line
	Photo Area		
Humidity	Process Area	RH%	On-Line
	Photo Area		

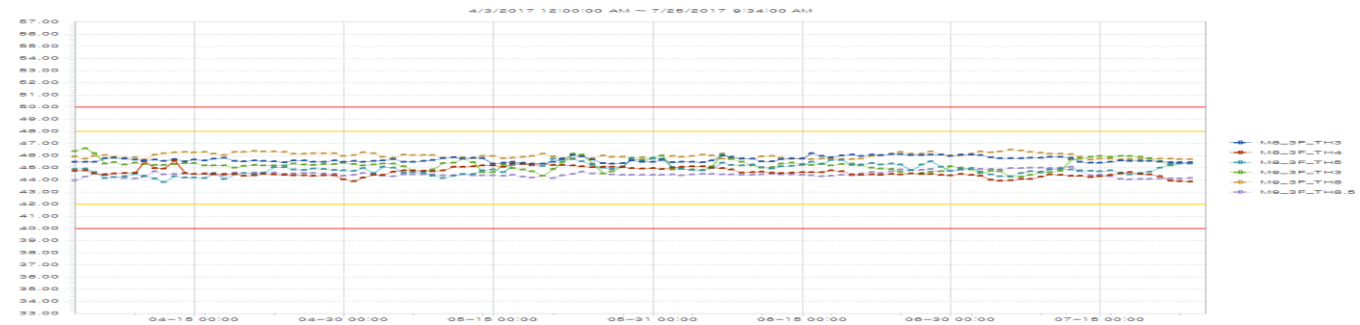
Monitoring System

- System IC FAB Environment Data [FMS]

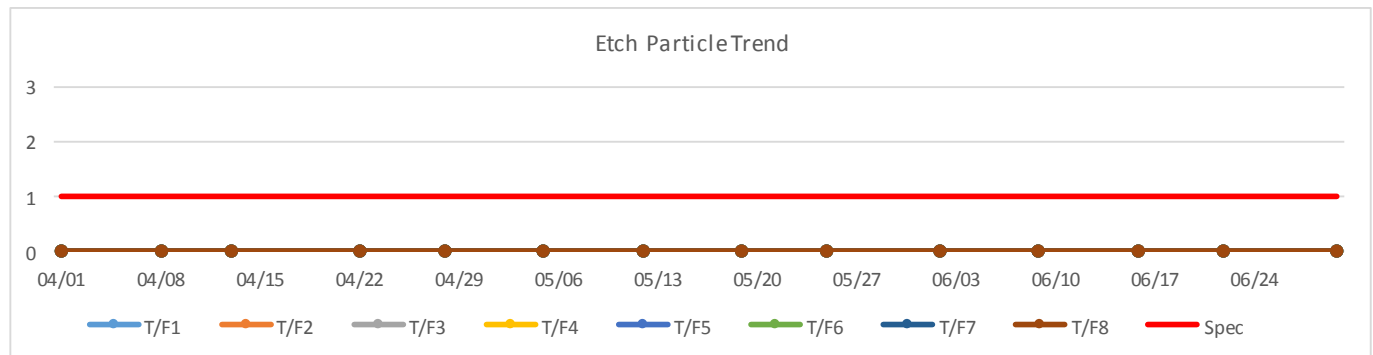
Temperature
(T/F Bay)



Humidity
(T/F Bay)

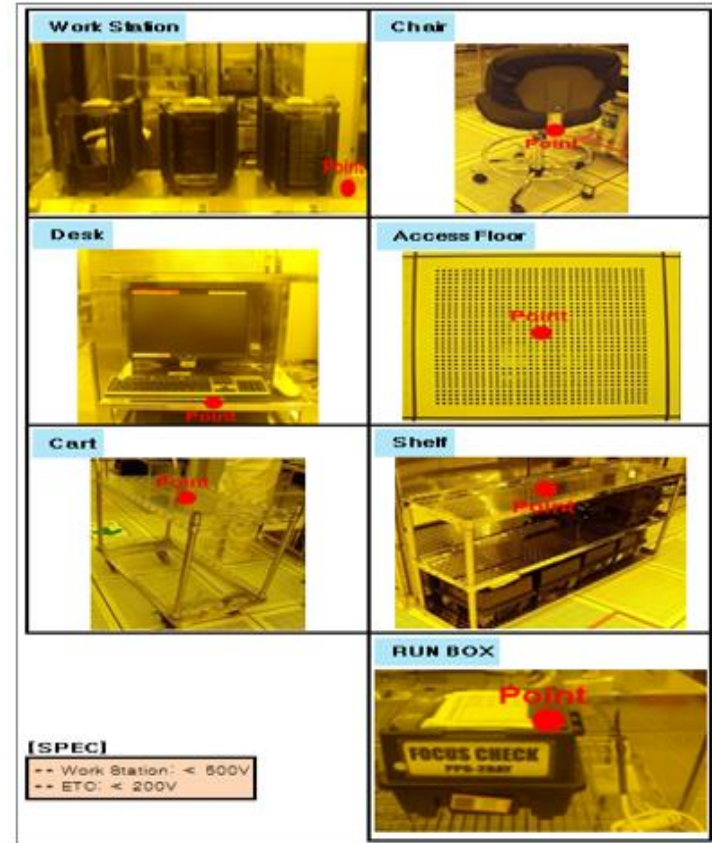


Particle
(T/F Bay)
off-line 평가



정전기 측정 지침

No	Items	Frequency
1	✓ Work Station	1 / HALF
2	✓ Chair	1 / HALF
3	✓ Desk	1 / HALF
4	✓ Access Floor	1 / HALF
5	✓ Cart	1 / HALF
6	✓ Shelf	1 / HALF
7	✓ Run Box	1 / HALF



정전기 측정 예시

▪ System IC FAB Line ESD Monitor Result

Work Station				Run Box				Access Floor							
Area	장비명	측정 값 (Volt/inch)	결과	Area	장비명	측정 값 (Volt/inch)	결과	Area	위치	측정 값 (Volt/inch)	결과	Area	위치	측정 값 (Volt/inch)	결과
PHOTO	PAS108	-20	Pass	T/F	TSC201	50	Pass	T/F	TSC201	10	Pass	T/F	TSC201	-20	Pass
	PAS105	-10	Pass		TCW102	80	Pass		TCW102	40	Pass		TCW102	0	Pass
	PAS206	20	Pass		TET102	-10	Pass		TET102	-20	Pass		1 BAY 입	60	Pass
	PAS204	0	Pass		TSC302	100	Pass		TSC302	40	Pass		TSC302	40	Pass
	PSF302	10	Pass		TSC303	30	Pass		TSC303	50	Pass		TSC303	20	Pass
	PTL302	0	Pass		TPE404	10	Pass		TPE404	80	Pass		TAP402	30	Pass
	PCD301	-30	Pass		TCW504	50	Pass		TCW504	60	Pass		TCW504	30	Pass
	PSC401	-30	Pass		TSP602	60	Pass		TSP602	20	Pass		TSP602	40	Pass
	PSF402	-20	Pass		TTM601	30	Pass		TTM601	40	Pass		TTM601	10	Pass
	PCD404	-20	Pass		TSC803	10	Pass		TSC803	20	Pass		TSC803	30	Pass
Etch	EAD109	-20	Pass	IMP	IML301	10	Pass	IMP	IML301	10	Pass	IMP	IML301	-20	Pass
	EHI101	-50	Pass		ITI301	-20	Pass		ITI301	30	Pass		ITI301	10	Pass
	EHP205	-70	Pass		ICD301	-30	Pass		ICD301	60	Pass		ICD301	-10	Pass
	EHP204	-50	Pass		IHI105	-30	Pass		IHI105	70	Pass		IHI105	20	Pass
	ESC301	-30	Pass		IHI102	50	Pass		IHI102	50	Pass		IHI102	20	Pass
	EPU401	-90	Pass		IPU103	-30	Pass		IPU103	-20	Pass		IPU103	10	Pass
	EPD502	-30	Pass		IML201	-10	Pass		IML201	20	Pass		IML201	-20	Pass
	EAO604	-40	Pass		IHE203	20	Pass		IHE203	60	Pass		IHE203	-10	Pass
	EPD701	-30	Pass		IMI202	-30	Pass		IMI202	80	Pass		IMI202	-10	Pass
	EHP802	-60	Pass		IMI201	-50	Pass		IMI201	-30	Pass		IMI201	-30	Pass
DIFF	DAL501	40	Pass	CMP	CCM303	20	Pass	CMP	CCM303	20	Pass	CMP	CCM303	20	Pass
	DHL414	40	Pass		CCM202	10	Pass		CCM202	30	Pass		CCM202	10	Pass
	DTM402	50	Pass		CCM205	10	Pass		CCM205	50	Pass		CCM205	10	Pass
	DRT403	60	Pass		CCM214	40	Pass		CCM214	40	Pass		CCM214	20	Pass
	DRT402	40	Pass		CTM105	20	Pass		CTM105	40	Pass		CTM105	-10	Pass
	DRT401	60	Pass		CTM107	-20	Pass		CTM107	-30	Pass		CTM107	70	Pass
	DFN310	80	Pass		CCM111	-20	Pass		CCM111	70	Pass		CCM111	-20	Pass
	DRT302	90	Pass		CCM112	10	Pass		CCM112	-20	Pass		CCM112	-20	Pass
	DPW201	100	Pass		CCM118	10	Pass		CCM118	30	Pass		CCM118	10	Pass
	DSC601	110	Pass		CCM304	10	Pass		CCM304	40	Pass		CCM304	10	Pass

정전기 측정 예시

▪ System IC FAB Line ESD Monitor Result

Chair				Desk				Cart															
Area	NO	측정 값 (Volt/inch)	결과	Area	NO	측정 값 (Volt/inch)	결과	Area	NO	측정 값 (Volt/inch)	결과	Area	NO	측정 값 (Volt/inch)	결과								
PHOTO	P-Ch-1	-30	Pass	T/F	T-Ch-1	50	Pass	PHOTO	P-D-1	-50	Pass	T/F	T-D-1	50	Pass	PHOTO	P-C-1	-10	Pass	T/F	T-C-1	90	Pass
	P-Ch-2	20	Pass		T-Ch-2	30	Pass		P-D-2	-20	Pass		T-D-2	50	Pass		P-C-2	-40	Pass		T-C-2	40	Pass
	P-Ch-3	-50	Pass		T-Ch-3	0	Pass		P-D-3	40	Pass		T-D-3	20	Pass		P-C-3	-70	Pass		T-C-3	-70	Pass
	P-Ch-4	-20	Pass		T-Ch-4	30	Pass		P-D-4	60	Pass		T-D-4	70	Pass		P-C-4	-20	Pass		T-C-4	30	Pass
	P-Ch-5	30	Pass		T-Ch-5	30	Pass		P-D-5	40	Pass		T-D-5	50	Pass		P-C-5	0	Pass		T-C-5	40	Pass
	P-Ch-6	-60	Pass		T-Ch-6	20	Pass		P-D-6	40	Pass		T-D-6	40	Pass		P-C-6	-70	Pass		T-C-6	70	Pass
	P-Ch-7	-70	Pass		T-Ch-7	50	Pass		P-D-7	50	Pass		T-D-7	20	Pass		P-C-7	-50	Pass		T-C-7	60	Pass
	P-Ch-8	-70	Pass		T-Ch-8	20	Pass		P-D-8	-30	Pass		T-D-8	90	Pass		P-C-8	-40	Pass		T-C-8	30	Pass
	P-Ch-9	-60	Pass		T-Ch-9	30	Pass		P-D-9	20	Pass		T-D-9	120	Pass		P-C-9	-60	Pass		T-C-9	70	Pass
	P-Ch-10	-60	Pass		T-Ch-10	50	Pass		P-D-10	50	Pass		T-D-10	40	Pass		P-C-10	10	Pass		T-C-10	60	Pass
Etch	E-Ch-1	70	Pass	IMP	I-Ch-1	-30	Pass	Etch	E-D-1	-20	Pass	IMP	I-D-1	-40	Pass	Etch	E-C-1	-60	Pass	IMP	I-C-1	-20	Pass
	E-Ch-2	60	Pass		I-Ch-2	20	Pass		E-D-2	-50	Pass		I-D-2	30	Pass		E-C-2	-20	Pass		I-C-2	-30	Pass
	E-Ch-3	-80	Pass		I-Ch-3	-50	Pass		E-D-3	0	Pass		I-D-3	30	Pass		E-C-3	-40	Pass		I-C-3	60	Pass
	E-Ch-4	-30	Pass		I-Ch-4	-30	Pass		E-D-4	50	Pass		I-D-4	-20	Pass		E-C-4	60	Pass		I-C-4	-60	Pass
	E-Ch-5	60	Pass		I-Ch-5	-50	Pass		E-D-5	50	Pass		I-D-5	-10	Pass		E-C-5	50	Pass		I-C-5	-60	Pass
	E-Ch-6	-20	Pass		I-Ch-6	-10	Pass		E-D-6	40	Pass		I-D-6	50	Pass		E-C-6	-90	Pass		I-C-6	-80	Pass
	E-Ch-7	90	Pass		I-Ch-7	-30	Pass		E-D-7	50	Pass		I-D-7	20	Pass		E-C-7	70	Pass		I-C-7	70	Pass
	E-Ch-8	30	Pass		I-Ch-8	-40	Pass		E-D-8	0	Pass		I-D-8	80	Pass		E-C-8	-60	Pass		I-C-8	-50	Pass
	E-Ch-9	-20	Pass		I-Ch-9	-40	Pass		E-D-9	-30	Pass		I-D-9	30	Pass		E-C-9	40	Pass		I-C-9	-60	Pass
	E-Ch-10	60	Pass		I-Ch-10	-60	Pass		E-D-10	20	Pass		I-D-10	-10	Pass		E-C-10	-50	Pass		I-C-10	-60	Pass
DIFF	D-Ch-1	60	Pass	CMP	C-Ch-1	40	Pass	DIFF	D-D-1	50	Pass	CMP	C-D-1	60	Pass	DIFF	D-C-1	90	Pass	CMP	C-C-1	10	Pass
	D-Ch-2	40	Pass		C-Ch-2	10	Pass		D-D-2	40	Pass		C-D-2	40	Pass		D-C-2	-10	Pass		C-C-2	50	Pass
	D-Ch-3	100	Pass		C-Ch-3	-30	Pass		D-D-3	20	Pass		C-D-3	10	Pass		D-C-3	30	Pass		C-C-3	50	Pass
	D-Ch-4	50	Pass		C-Ch-4	-10	Pass		D-D-4	60	Pass		C-D-4	20	Pass		D-C-4	40	Pass		C-C-4	-30	Pass
	D-Ch-5	70	Pass		C-Ch-5	10	Pass		D-D-5	60	Pass		C-D-5	20	Pass		D-C-5	50	Pass		C-C-5	20	Pass
	D-Ch-6	90	Pass		C-Ch-6	0	Pass		D-D-6	70	Pass		C-D-6	30	Pass		D-C-6	50	Pass		C-C-6	40	Pass
	D-Ch-7	100	Pass		C-Ch-7	-20	Pass		D-D-7	80	Pass		C-D-7	20	Pass		D-C-7	60	Pass		C-C-7	50	Pass
	D-Ch-8	90	Pass		C-Ch-8	-30	Pass		D-D-8	50	Pass		C-D-8	-10	Pass		D-C-8	100	Pass		C-C-8	70	Pass
	D-Ch-9	80	Pass		C-Ch-9	-10	Pass		D-D-9	70	Pass		C-D-9	20	Pass		D-C-9	80	Pass		C-C-9	-60	Pass
	D-Ch-10	70	Pass		C-Ch-10	10	Pass		D-D-10	30	Pass		C-D-10	90	Pass		D-C-10	70	Pass		C-C-10	30	Pass

정전기 측정 예시

▪ System IC FAB Line ESD Monitor Result

Shelf							
Area	NO	측정 값 (Volt/inch)	결과	Area	NO	측정 값 (Volt/inch)	결과
PHOTO	P-S-1	20	Pass	T/F	T-S-1	30	Pass
	P-S-2	50	Pass		T-S-2	0	Pass
	P-S-3	20	Pass		T-S-3	20	Pass
	P-S-4	30	Pass		T-S-4	20	Pass
	P-S-5	30	Pass		T-S-5	30	Pass
	P-S-6	10	Pass		T-S-6	20	Pass
	P-S-7	30	Pass		T-S-7	50	Pass
	P-S-8	70	Pass		T-S-8	20	Pass
	P-S-9	10	Pass		T-S-9	40	Pass
	P-S-10	-20	Pass		T-S-10	20	Pass
Etch	E-S-1	30	Pass	IMP	I-S-1	-10	Pass
	E-S-2	90	Pass		I-S-2	-60	Pass
	E-S-3	-70	Pass		I-S-3	30	Pass
	E-S-4	20	Pass		I-S-4	10	Pass
	E-S-5	0	Pass		I-S-5	-50	Pass
	E-S-6	-30	Pass		I-S-6	20	Pass
	E-S-7	-30	Pass		I-S-7	10	Pass
	E-S-8	10	Pass		I-S-8	-20	Pass
	E-S-9	30	Pass		I-S-9	20	Pass
	E-S-10	30	Pass		I-S-10	-40	Pass
DIFF	D-S-1	30	Pass	CMP	C-S-1	-40	Pass
	D-S-2	80	Pass		C-S-2	-40	Pass
	D-S-3	60	Pass		C-S-3	30	Pass
	D-S-4	40	Pass		C-S-4	20	Pass
	D-S-5	50	Pass		C-S-5	-20	Pass
	D-S-6	90	Pass		C-S-6	-30	Pass
	D-S-7	60	Pass		C-S-7	50	Pass
	D-S-8	80	Pass		C-S-8	-30	Pass
	D-S-9	60	Pass		C-S-9	0	Pass
	D-S-10	60	Pass		C-S-10	30	Pass

EoD